

## Instruction for fixing your player problems v1.1

### 1. Synchronization problems.

OK, so you have downloaded FASM release, tried to play it on your favorite player and it failed, because they have synchronization problems between video and audio. You think that if you have never before experienced such problems, the player is OK, but the video is not. WRONG!!!

FASM releases contain a bit different stream and it is known that even if its MPEG4 specification correct, some players don't handle it properly and **DISPLAY AT SIGNIFICANT WORSE QUALITY**. It happens mostly with older players and sometimes update fixes problem, so you do not need to change your favorite player completely, but if you wish to try a player i consider the best read below. Remember you are doing this on your own risk, so don't blame me if for unknown reason something f... up.

### 2. Downloading the copy of the best player i know.

The official version of Media Player Classic Home cinema Edition you can find here:

<http://mpc-hc.sourceforge.net/>

but if you are looking for latest ALPHA version (RECOMMENDED) go here:

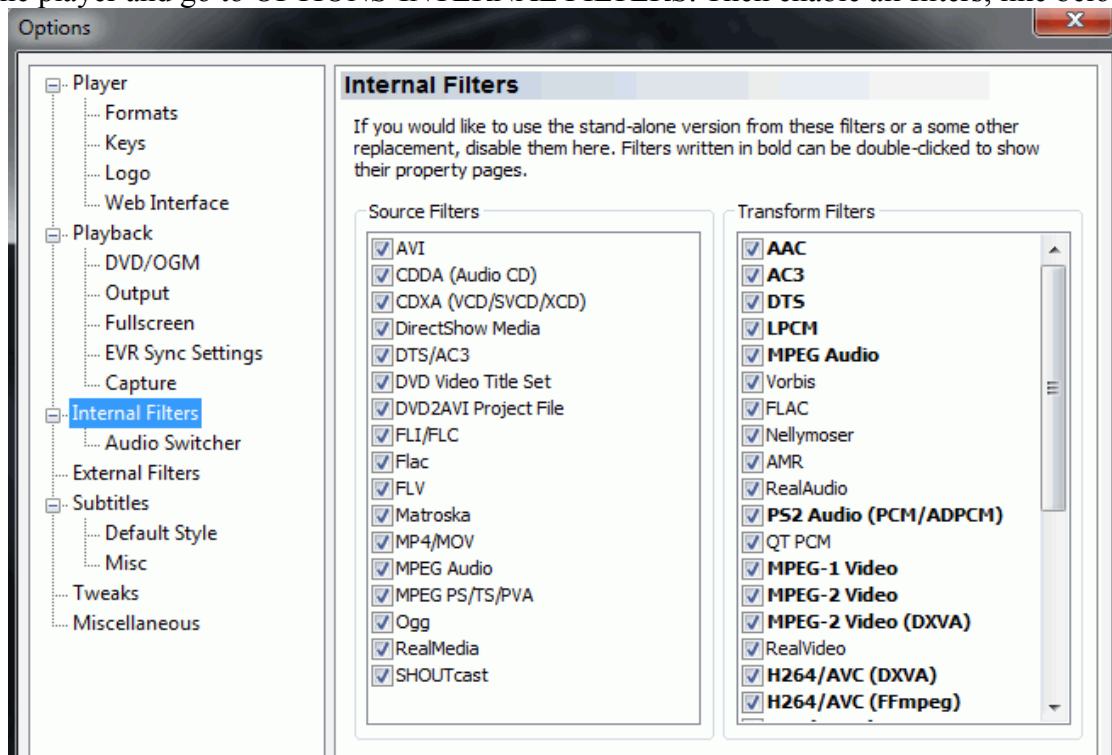
<http://www.xvidvideo.ru>

### 3. Configuring the Media Player Classic Home Cinema Edition.

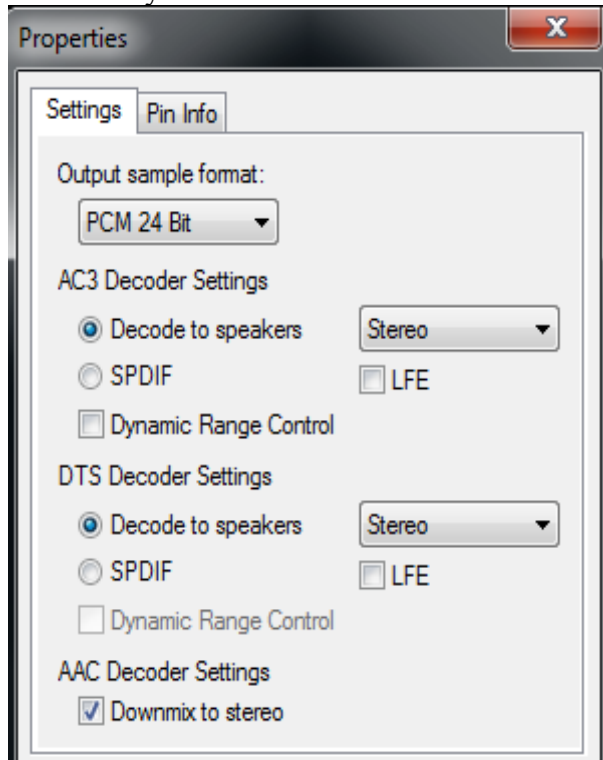
OK so the next step is to configure your fresh player properly. It is good to do one thing before start using this player. It is known that old configuration of it (in case you used it before) can cause strange problems, so I recommend run regedit.exe, then find and delete completely this key.

HKEY\_CURRENT\_USER\Software\Gabest

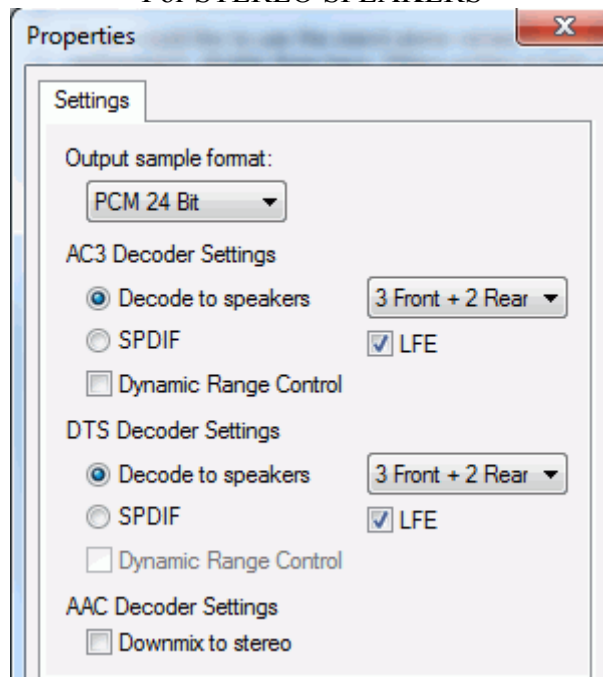
Start the player and go to OPTIONS-INTERNAL FILTERS. Then enable all filters, like below



Next double click on AAC to go into its properties. First thing you need to set is 24Bit Output Sample Format, then you can decide you want to have stereo or 5.1 sound.

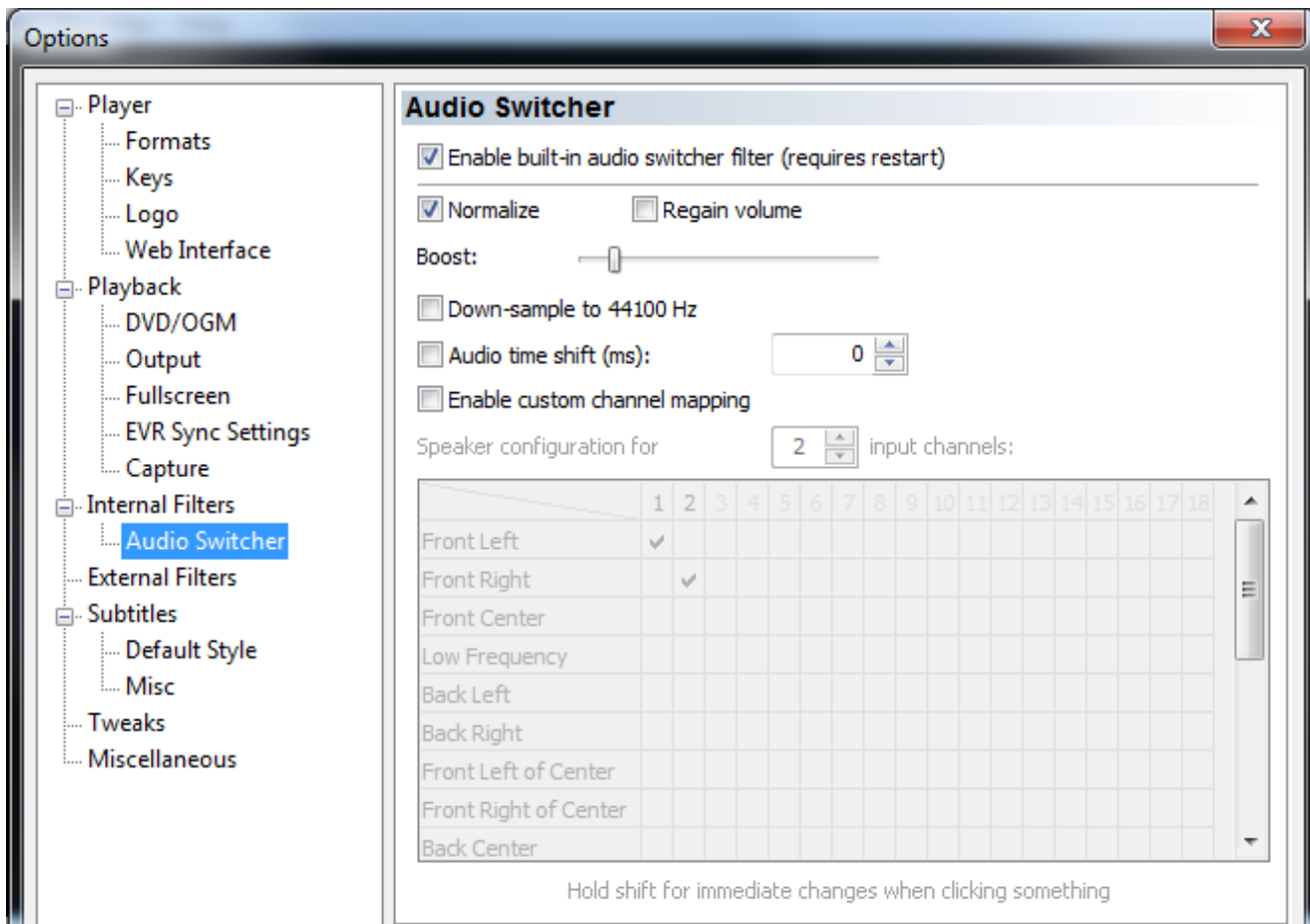


For STEREO SPEAKERS

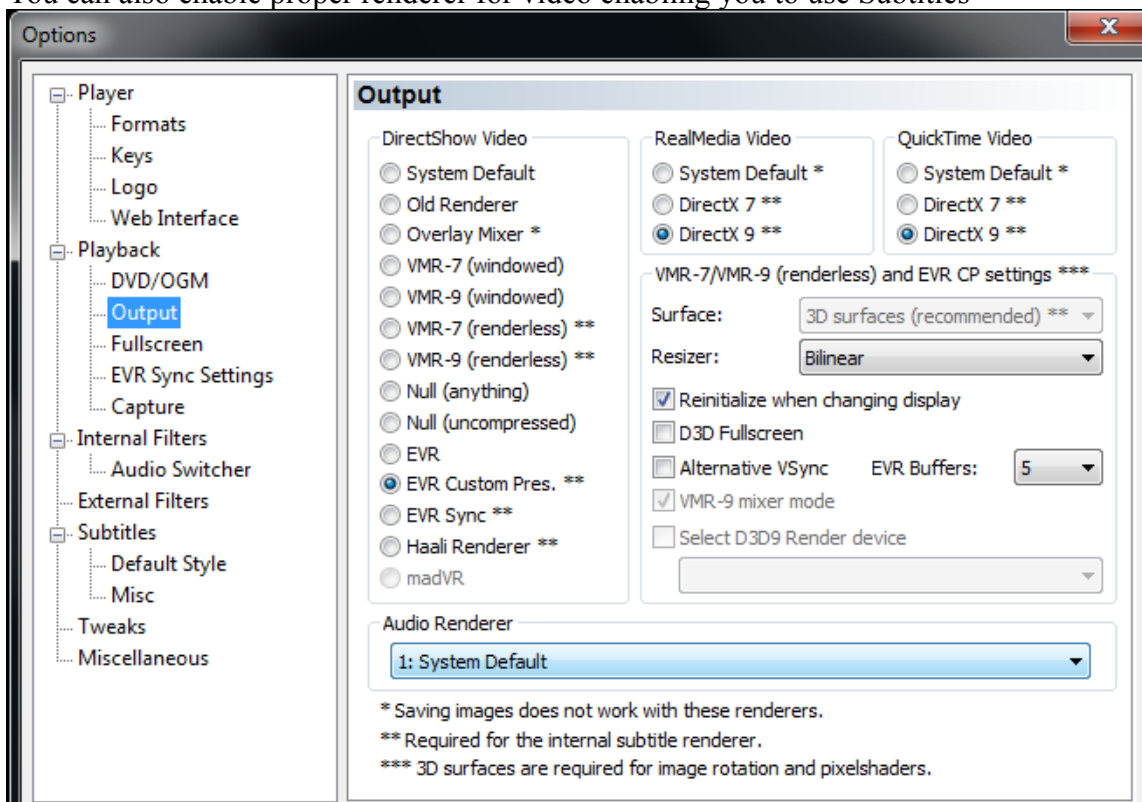


For 5.1 SPEAKERS

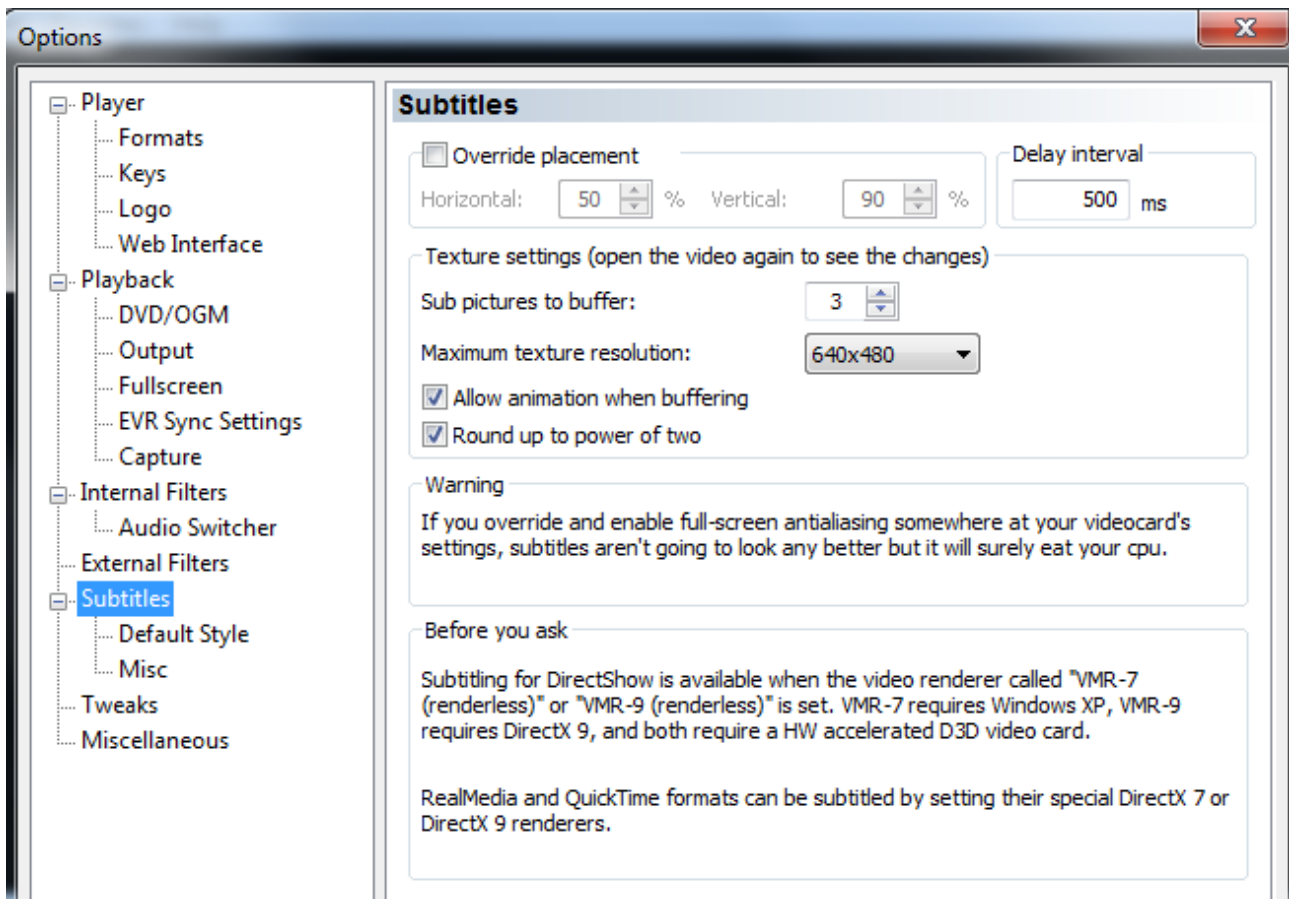
Then go to audio switcher and set the proper Volume Gain. For unknown reason for me the internal AAC filter of MPC HCE is not as loud as DTS one. This gives the impression of bad dynamics, but can easily be fixed. Set the level you think is good for you. You can also/instead use REGAIN VOLUME with BOOST function.



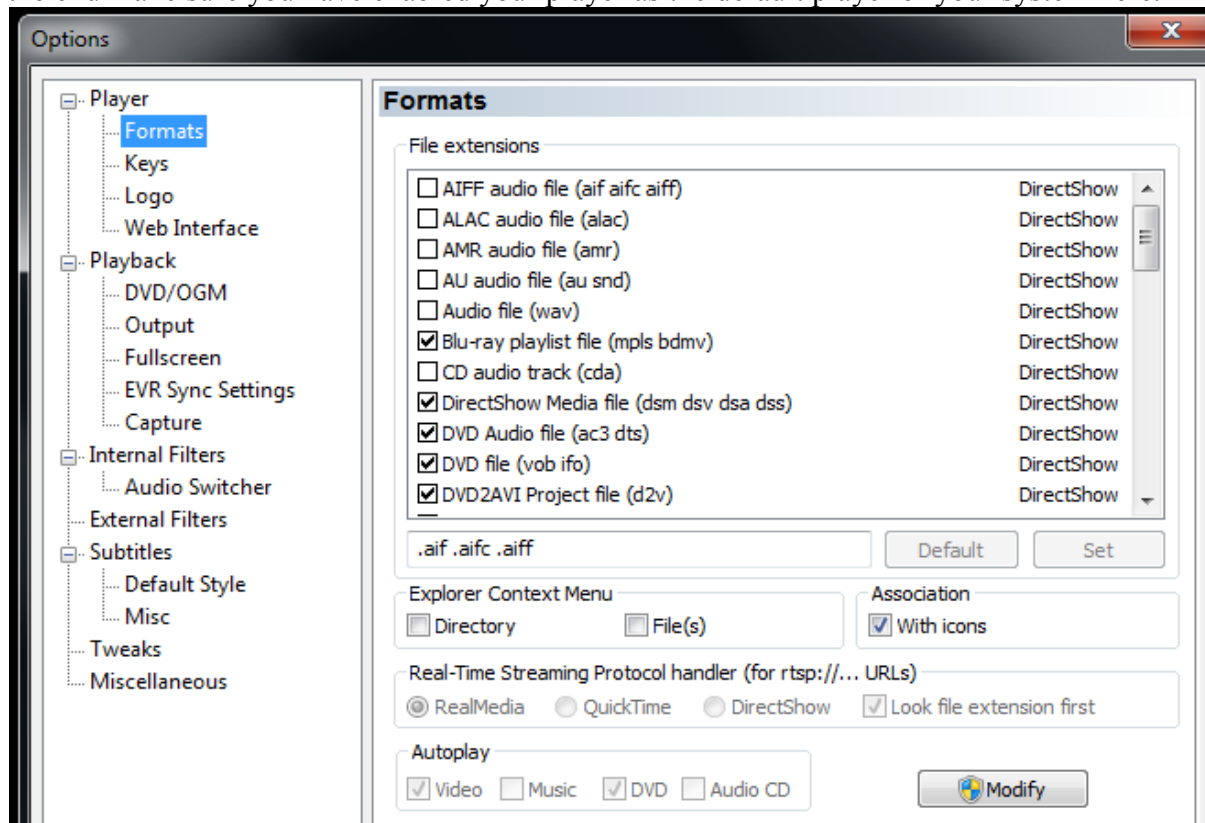
Next if you do have different sound cards in your system you can choose which one can play it here. You can also enable proper renderer for video enabling you to use Subtitles



If you are using SUBTITLES it is a good idea to limit the resolution here, as there are some graphics card which does not operate correctly otherwise.



At the end make sure you have enabled your player as the default player of your system here.



#### 4. Credits

I want to thank everybody who have created this wonderful program. Keep up the good work!

(c) 2011 FASM